

**New camera technologies that  
solve real world problems**



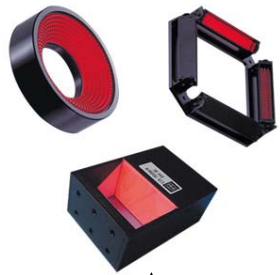
**Oliver Richford  
Sales Engineer**

# Who are Stemmer Imaging?



- Independent of manufacturer- We select the best technology from the worlds leading providers.
- Independent of Technology – We embrace all technologies so we can provide impartial advice on what technology is best.
- Leading - We believe our revenue from core vision technology is the largest in Europe.

► OUR PRODUCTS



**Illumination**

**Lenses**

**Cameras**

**Cables**

**Image capture**

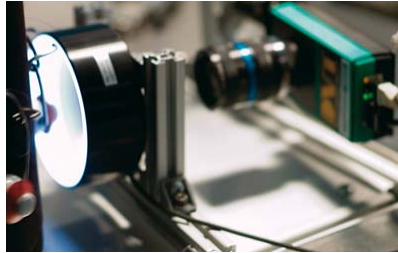
**Software**

**Systems**

**Accessories**



► OUR SERVICE



**Validated components  
Tested as solutions**

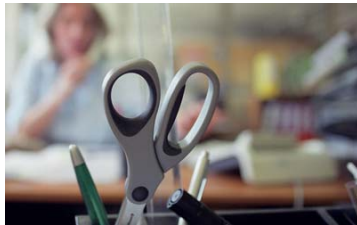
**Feasibility studies**

**FIRSTSIGHT application  
laboratory**

**Custom  
solutions**

**Training**

**Support services  
by hotline and on site**



► OUR PARTNERS



# IDS UI-1008-XS Camera

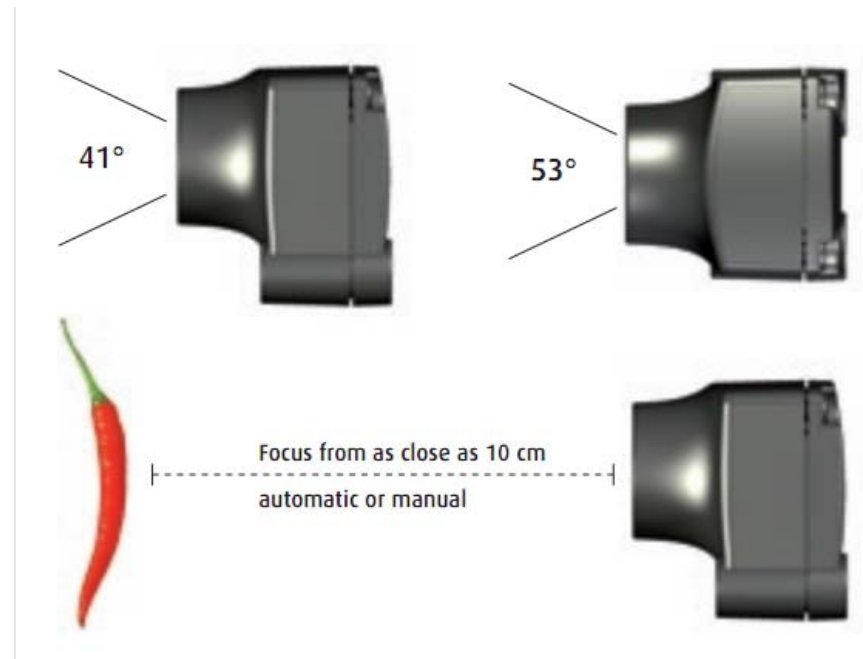


- 8 Megapixel Sony CMOS Sensor
- 720P HD Video at 15fps
- USB 2.0 Interface
- Compact size
- Rugged magnesium housing
- Comprehensive software package





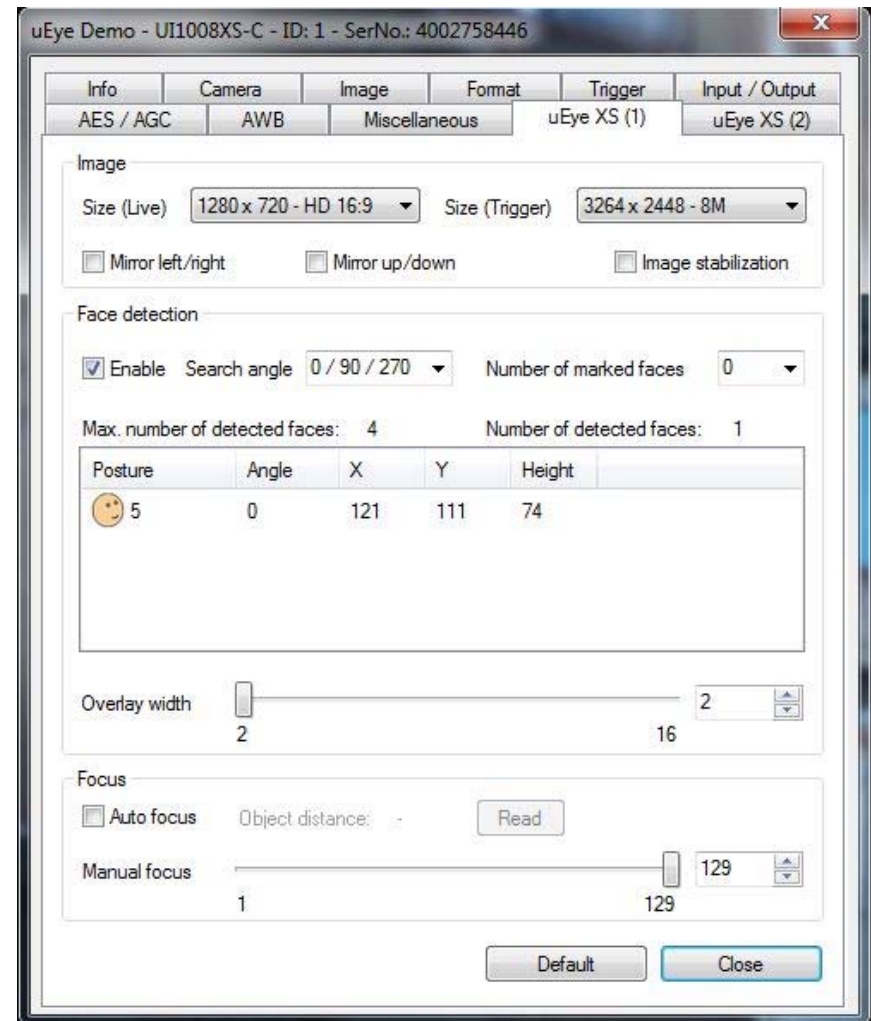
- Integrated optics
- Auto-focus
- Manual focus available
- 10cm minimum object distance
- Wide viewing angle



# IDS UI-1008-XS Camera



- Face detection
- Upto 4 faces at once
- X, Y and height co-ordinates of face
- Posture/Angle of face
- Overlay to show captured faces
- Spot metering



# IDS uEye HDR Camera



- For high dynamic range applications
- Logarithmic CMOS sensor
- Photo-voltaic solar cell technology
- Rapid adjustment to changes in light level
- Allows details in bright and dark parts of image to be seen at the same time



**HDR**

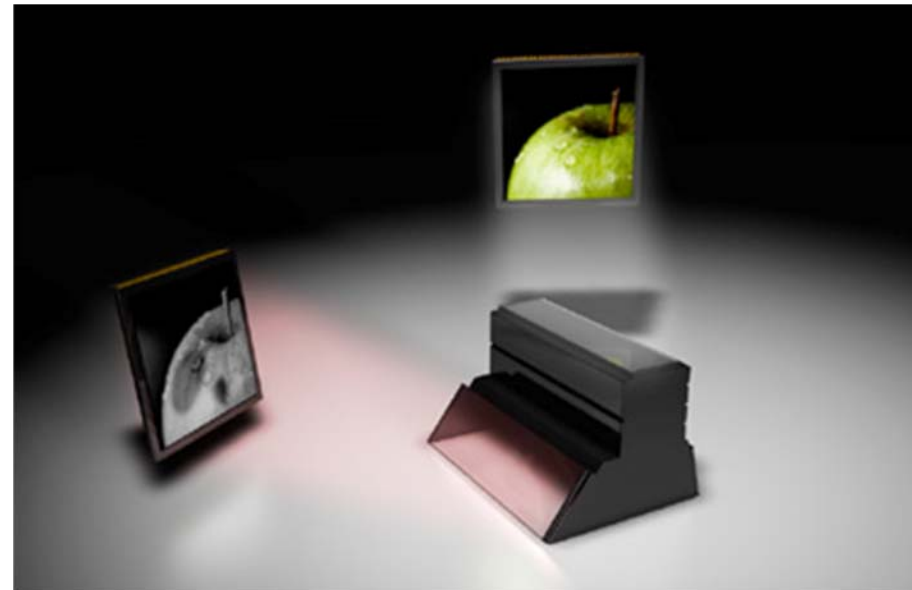


- 2 monochrome sensors
- Light separated by internal prism
- Separate sensor control
- Frame averaging gives extremely high signal to noise ratio
- Sensors aligned within  $\frac{1}{4}$  pixel accuracy.
- Individual control of gain and exposure time





- Dual sensor technology
- Colour and monochrome sensors
- Extended wavelength inspection
- 0.8 Megapixels
- 30 frames per second
- Available on CameraLink or GigE



# JAI 3CCD Cameras



- A range of resolutions available
- Sensors can be individually controlled
  - Exposure time
  - Gain
  - White balancing
- Sensors aligned within  $\frac{1}{4}$  pixel accuracy
- Available for CameraLink and GigE
- Stemmer also supply specialist lenses



# JAI LQ-200CL



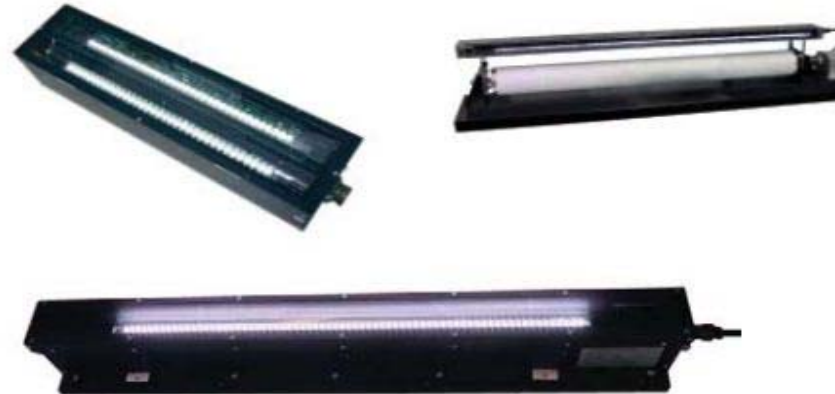
- 4 CCD sensors: Red, green, blue and NIR at the same time
- Internal prism splits light 4 ways
- Large  $14\mu\text{m}^2$  pixels
- 2048 pixel line resolution
- 19khz line rate
- CameraLink interface
- Applications:
  - Food inspection
  - High-end print inspection
  - Materials sorting



# Tichawa Contact Image Sensors



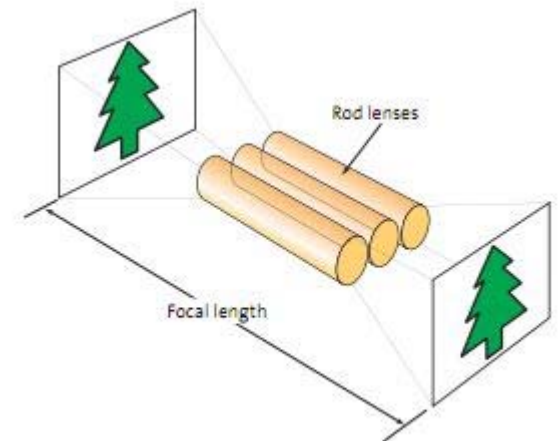
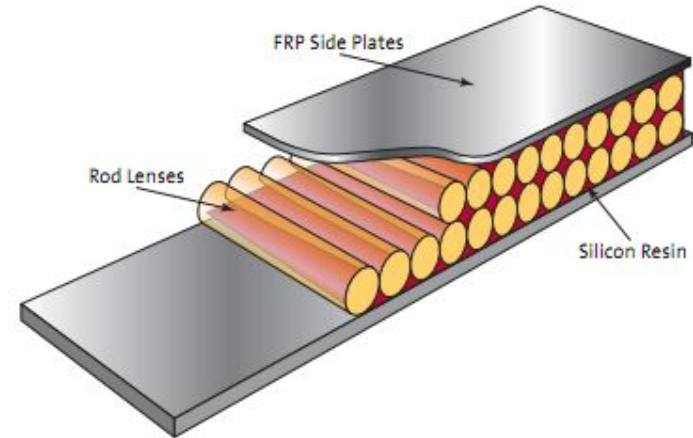
- A great alternative to linescan
- Compact unit houses all components
- Modular concept allows for variable lengths
- CMOS line sensor
- Exposure controlled by strobing LEDs
- RGB and NIR lighting available
- High speeds available
- CameraLink interface



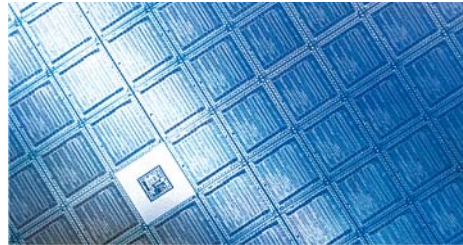
# Tichawa Contact Image Sensors



- SELFOC lens array
- 1:1 ratio – no magnification
- 8-14mm working distance
- 1mm depth of focus
- Easy set-up
- Custom units available
  - e.g. light separated to allow for backlighting
- Best used in 2D applications



**Thank you for listening.**



STEMMER IMAGING Ltd  
The Old Barn  
Grange Court, Grange Road  
Tongham  
Surrey  
UNITED KINGDOM

Oliver Richford

Phone: +44 1252 780022

[o.richford@stemmer-imaging.co.uk](mailto:o.richford@stemmer-imaging.co.uk)

[www.stemmer-imaging.co.uk](http://www.stemmer-imaging.co.uk)

**STEMMER**<sup>®</sup>  
I M A G I N G